

# AmazonCreek

CHALET JOLIE



At Amazon Creek, we specialise in combining luxurious properties in spectacular settings with first class service. Our exceptional standards, caring staff and close attention to detail set us apart. Enjoy a truly memorable and unique holiday in our beautiful chalets, villas, and apartments.

We love our destinations and look forward to sharing our extensive knowledge, ensuring that you have an unforgettable experience that will make you want to return time and time again.



# CHALET JOLIE

sleeps up to 10 guests

350 sq.m

3 levels

Chalet Jolie is the perfect family chalet for your relaxed luxury vacation in the French Alps. The chalet's warm, elegant interiors are a blend of contemporary, classic and bespoke pieces. Floor to ceiling glass offers extensive views of the spectacular Mont Blanc from all three of its floors.

The chalet sleeps up to 10 guests over five beautiful, individually designed bedrooms each sensitively positioned to allow guests space and quiet to retreat to when desired and the sauna room on the lower ground floor provides a tranquil refuge to soothe and relax after a busy day on the mountain.





# THE PERFECT ESCAPE FOR SUMMER AND WINTER HOLIDAYS

Chalet Jolie is a gorgeous modern chalet in Saint-Gervais Mont-Blanc that offers excellent facilities for families and friends so enjoy the beautiful surroundings. On the ground floor the living area opens up into large, open-plan luxury, divided into cosy corners for you to comfortably curl up by the fire with a good book. The fully equipped kitchen provides the perfect spot to prepare dinner or for you very own private chef to work their magic.

The wraparound terrace provides the perfect spot to sit out with furs and sumptuous throw during the winter months, and a beautiful outdoor dining spot in summer. Enjoy a glass of champagne and starlit soak in the Nordic bath hot tub.

The chalet is a stone's throw from the piste of the Le Bettex run that leads down to the St Gervais telecabine linking to the ski runs of St Gervais, St Nicolas de Verce and Megeve.

# FEATURES

Open plan living dining area with space for the whole family to enjoy.

Large terrace off the open plan living dining area

Family room / Kids den area stocked with toys, games, puzzles and a large smart TV

Sauna

Outdoor Nordic Bath







# ACCOMODATION

## Bedroom one

Master suite with en-suite bathroom including free-standing bath, WC, shower, and double vanity unit

## Bedroom two

Master suite with en-suite shower room and WC

Bedroom three

Bunk room with adjacent shower room and separate WC.

## Bedroom four

Double bedroom with balcony.

## Bedroom four

Double or twin beds with balcony

## Family Bathroom

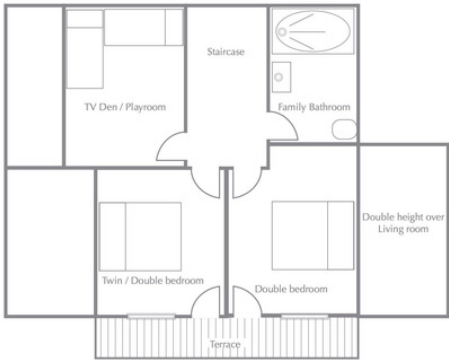
Large family bathroom with bath and integrated shower, and WC



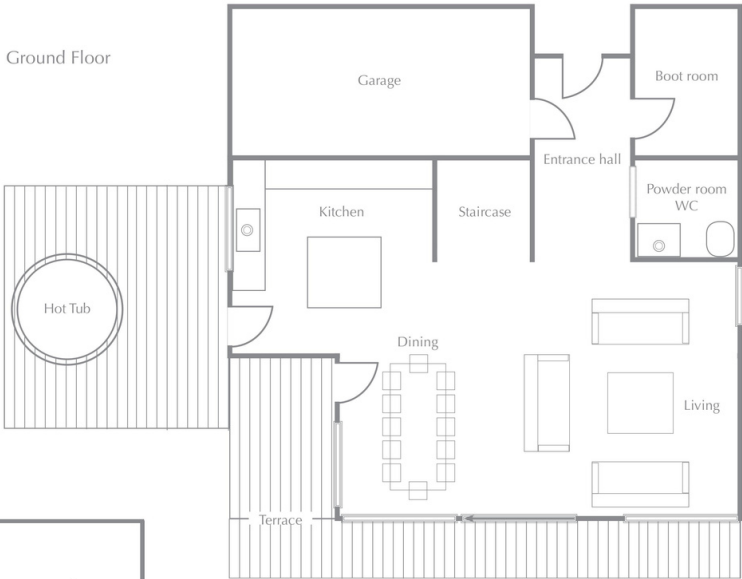


# FLOOR PLANS

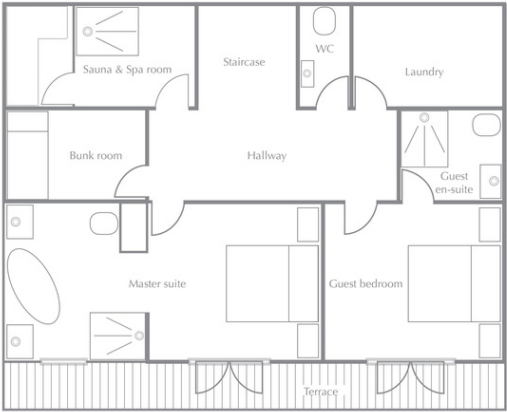
First Floor



Ground Floor



Lower Ground Floor











## EXCEPTIONAL SERVICE WITH A SMILE

A bespoke holiday with Amazon Creek is as simple as telling us what you want and need, and leaving the rest to us. At every stage, from the specialist pre-arrival concierge to the dedicated in resort team, we make sure your holiday is exactly as you imagined and completely hassle free. Simply sit back and let us pamper you, while we take care of the details.

## LUXURY VACATION PACKAGE

- Dedicated service from our expert pre-arrival concierge guiding you step by step through our booking process.
- Chalet meet and greet with our Amazon Creek resort manager
- Dedicated service from our professional in resort team.
- Welcome 'essentials' pack: including a bottle of champagne, local wine, cheese, jams and charcuteries
- Selection of teas and Nespresso coffee
- Delivery of fresh bread and pastries each morning
- Daily Spa/Pool cleaning and chemical checks
- Daily bin collection
- Luxury linen, towels, dressing gowns and bathroom products

## LUXURY CATERED PACKAGE

- Private chef providing bespoke menu consultation to develop your own personal menu and provide the following:
  - Champagne reception and canapés on arrival night
  - Chef prepared breakfast on 5 days, continental breakfast 2 days per week
  - 5 days four course evening meal service
  - Daily afternoon tea
  - Separate children's dinners on request
  - Host to serve breakfast and evening meals.
  - Exceptional handpicked house wines from Conroy Vins to accompany your evening meals.
  - Unlimited beers and soft drinks throughout your stay
- Daily housekeeping and mid-week linen change



# SAINT GERVAIS LES BAINS

The resort of Saint-Gervais is home to the Mont-Blanc and the most direct route of access to its summit. Saint-Gervais acquired an international reputation from the 19th century onwards and rapidly became a prestigious tourist destination

In winter Saint-Gervais is part of the Evasion Mont-Blanc ski area, with more than 400 kilometres of tree-lined ski slopes and breathtaking panoramic views.





Heights ranging from 850m to 2,353m

The area of Saint Gervais and Megeve has 81 different ski lifts and 445 kilometres of pisted skiing and unlimited off piste.

### Average snow levels

Monthly snowfalls from 100cm in December to 185cm in April.

### Sports & Activities:

In winter

Skiing and extreme skiing, heli skiing, snowboarding, ice climbing. Husky sledding, Tandem Paragliding and Snowshoeing.

In summer

white-water rafting, canyoning, paragliding, hiking, mountain biking, glacier mountaineering, golf, tennis, horse-riding and yoga.

### Travel times

UK to Geneva flight time 1.5 hours.

Geneva to Saint Gervais transfer time 1 hour.

Paris to Saint Gervais driving time 6 hours





Amazon Creek are on hand to build a tailored made itinerary organising everything from guided hikes and boat trips to massage treatments, restaurant reservations, and everything in between. Every minute of your Amazon Creek vacation will be planned to the finest of detail, but don't worry there will be plenty of time to relax!!

It's simple really, you tell us exactly what you would like to experience, your likes, dislikes, as much information as possible, we will take all of that and build the perfect bespoke itinerary. You then let us know what you want to keep, remove or have more of and the final result is "the perfect vacation" where all you need to if be there because the Amazon Creek concierge service doesn't stop there. Your very own resort team will be on hand to facilitate the smooth running of your vacation from start to end.

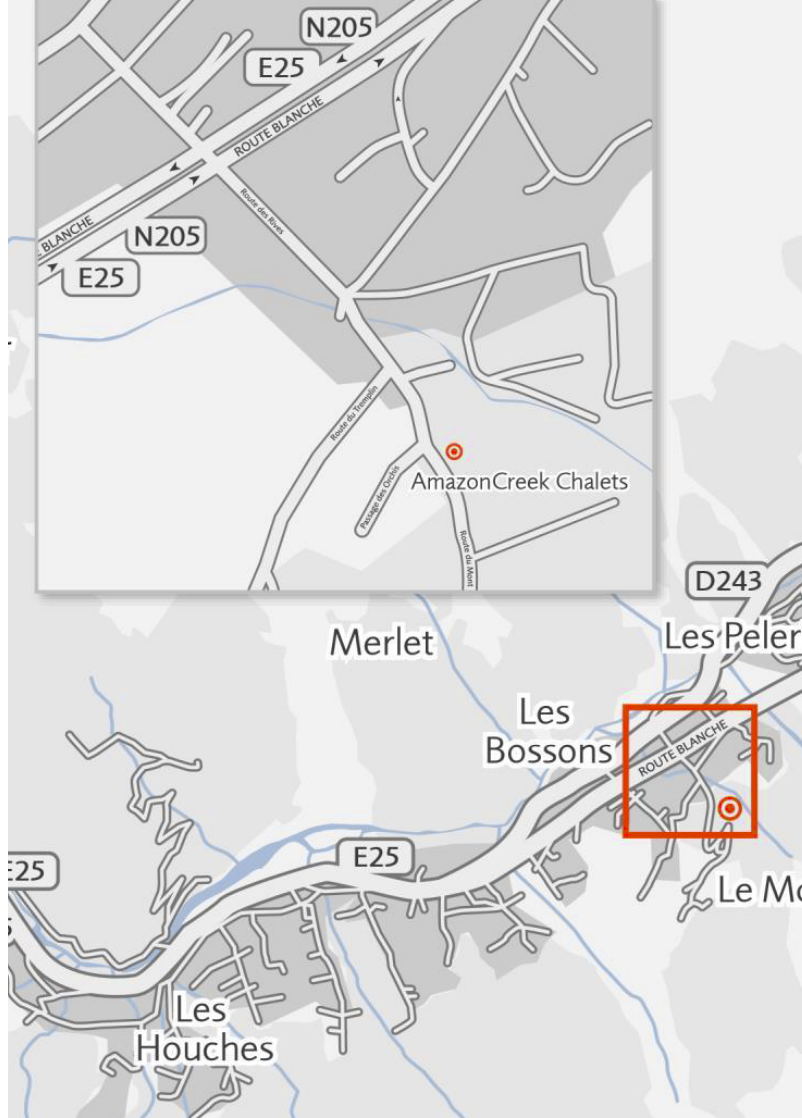
# DIRECTIONS

Coordinates: 45.8884254,6.697953

[Google Maps](#)

Distance to ski lifts:

- Saint-Gervais: 2km / 5 minute drive
- Les Bettex: 4.5km / 10 minute drive
- Mont d'Arbois (Megeve): 8km / 24 minute drive
- Prarion (Les Houches): 18km / 23 minute drive
- Montjoie (Les Contamines): 13km / 18 minute drive
- Combloux: 10km / 15 minute drive










 [www.amazoncreek.com](http://www.amazoncreek.com)

 [enquiries@amazoncreek.com](mailto:enquiries@amazoncreek.com)

 +44 (0)1865 865 456 / +33 (0) 9 75 18 61 29

