



OVERVIEW

Sleeps up to 8 + 2 guests

400 sq. m living area

3 levels

3 Staff

VILLA FREYA

A fantastic beachfront luxury villa in Sète, southern France, Villa Freya sleeps up to eight guests in four en-suite bedrooms. There is a fifth en-suite bedroom in the basement, perfect for the nanny or a hideaway for the kids, taking the occupancy to 10.

The villa highlights include a spectacular glass walled swimming pool, manicured gardens, gym, table tennis, cinema room and sauna. Use of the villa's speedboat, kayaks, stand-up paddles and mountain bikes for all ages ensure there's plenty to do for those looking for a more "active" break.



THE
PERFECT
FAMILY
GETAWAY



ACCOMMODATION

The combination of traditional local stone, wood and glass provide for a spectacular entrance. The light and airy open plan living area provides a fabulous space for dining, entertaining and just taking it easy. The kitchen is fully equipped with utensils and there is a smart TV, DVD library and sound system in the lounge and dining room. Enjoy 'alfresco' dining and evening BBQ's on the terrace as the sun sets over the sea.

There are stunning sea views from the the master bedrooms and balcony. Four of the bedrooms are suitable for double or twin occupancy and all have smart TV's and DVD players. The luxurious en-suite bathrooms are brimming with L'Occitane products and fluffy bathrobes and towels for your comfort.

Relax in the sauna or watch your favourite movie in the cinema room, both situated in the basement.

Staff & Services

- Hostess providing daily light clean and mid -week linen change
- Chalet manager providing in resort concierge service
- Daily delivery of fresh bread and pastries (6 days)
- Welcome hamper
- Champagne reception
- Complimentary water sports programme including 4 half days on the speedboat (Mid June to September)
- Use of villa bicycles, kayaks and stand-up paddle boards



Sete Information

In the Languedoc region on the south west coast of France. Sete has natural sandy beaches and over 20km of newly built beach promenade.

Sports

Water sports including water skiing, kayaking, sailing and diving.

Weather

Highs of 21° in May to 31° in August with evening highs of 12° and 19° , with over 10 hours of daylight in the summer months

Travel

UK to Montpellier flight time
1.5 hours Montpellier to Sete transfer
40 minutes.

TGV fast train from Paris to Montpellier
journey time 3 hours 30 minutes.





FACILITIES

Wi-Fi and sound systems throughout
Fully air-conditioned
Terrace furniture and BBQ
Hairdryer in every bedroom
Heated outdoor swimming pool
Gym with a bench, full range of weights, cross trainer machine, medicine ball and mats.
Cinema Room, with DVD player, Apple TV and Netflix
Sauna
Fully equipped modern kitchen



DETAILS

Luxury bath robes and slippers
Beach towels
L'Occitane bathroom and spa products
Flowers
Pre-arrival concierge service
Meet & Greet on arrival with the villa team



BEDROOMS

Adjacent to Villa Frankie, the two villas are perfect for larger groups of up to 20!

Bedroom 1

King size bed or twin bed with en-suite bathroom with shower. Smart TV.

Bedroom 2

King size or twin bed with en-suite bathroom with shower. Smart TV.

Bedroom 3

King size waterbed with en-suite bathroom with bath and shower. Smart TV. Balcony terrace overlooking the Mediterranean.

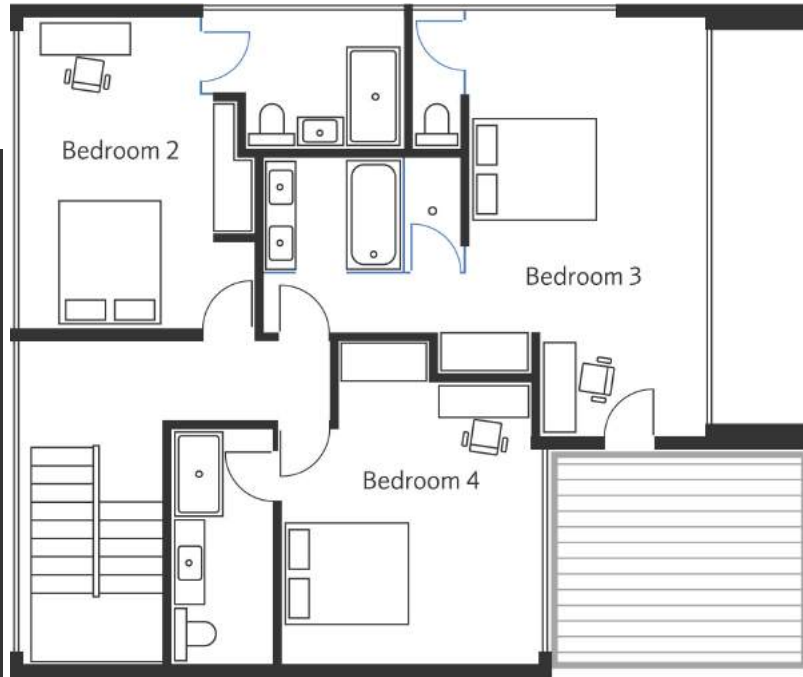
Bedroom 4

King size bed or twin with en-suite bathroom with shower. Smart TV. Balcony terrace overlooking the Mediterranean.

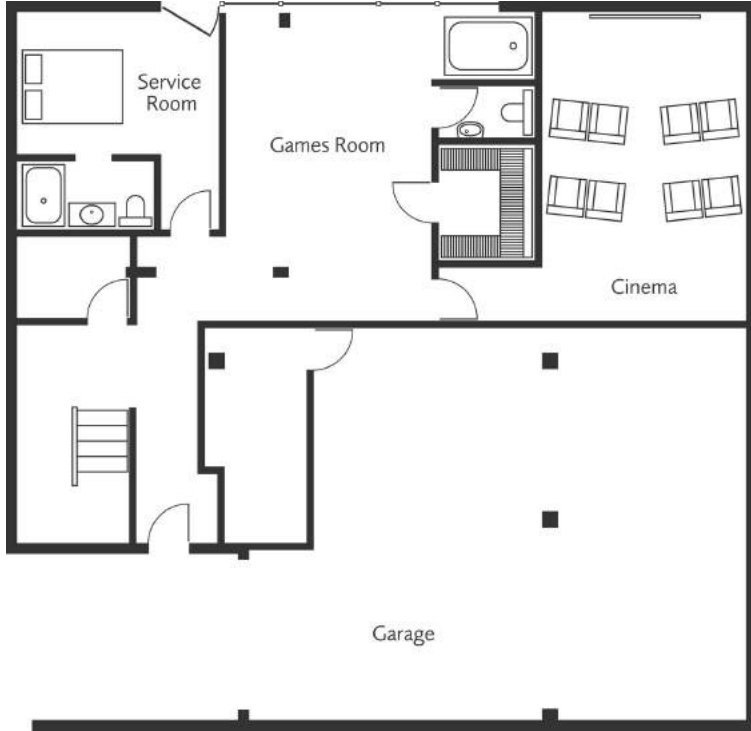


FLOOR PLANS

First Floor

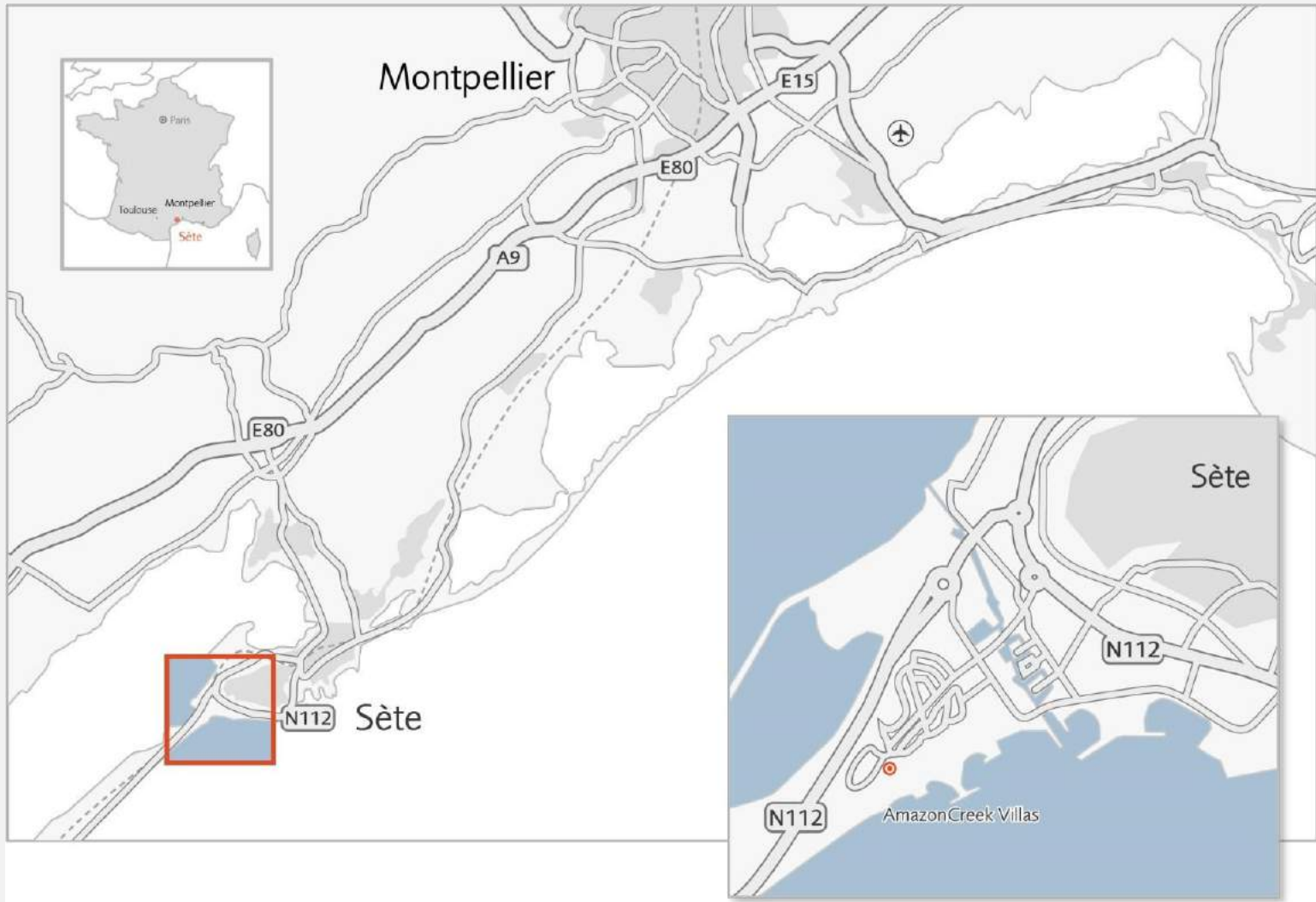


Lower Ground Level



Ground Floor





Villa Freya
 38 Chem la Brise Marine
 Zac De Villeroy
 34200
 Sete

DIRECTIONS

From Montpellier head North West and at roundabout take the 1st exit
 Slight right at D172

At roundabout take exit onto the D66 ramp

Take exit to A9 Grammont

At Ron-Point du Zenith take the 3rd exit to Sete/ Beziers/ Barcelona to A9

Merge onto A9 (partial toll road)

Take exit 33 to Sete/ Frontignan/ Balaruc (toll road)

Merge onto D600 (partial toll road)

At the roundabout with Chateau de Peyrade take signs to Beziers and continue to Sete centre.

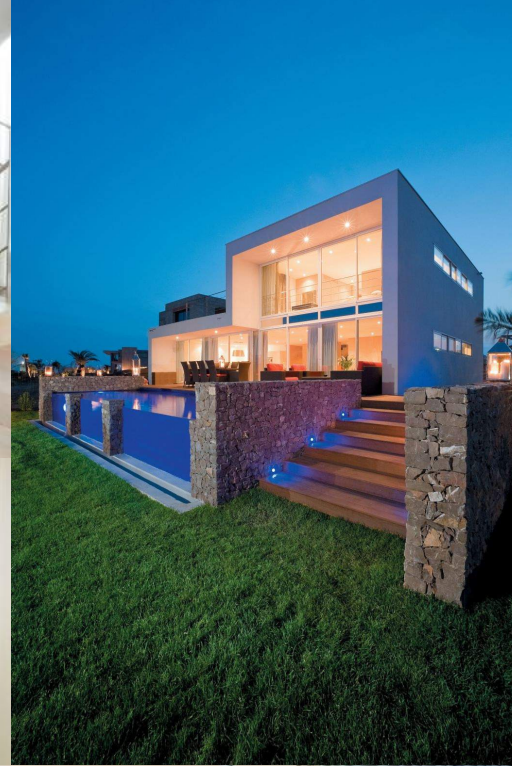
Go over the train line and follow signs for Beziers/ Chatea Vert. Continue straight following signs for Beziers /Adge onto Boulevard du Verden.

At the roundabout take the 1st exit signposted Villeroy/ Beziers.

At the next roundabout take the second exit to Le Quilles/ Villeroy. At first set of traffic lights take the right onto Avenue du Ponant and continue.

At mini roundabout go straight over and at next mini roundabout take the second exit.

Turn immediately right onto Rue du Grec, then immediately left onto Rue de la Brise Marine and the villas are immediately on the left behind the white gates.



VILLA FREYA

+44 (0) 1865 865 456

enquiries@amazoncreek.com

www.amazoncreek.com